



HYDRAULIC ELEVATORS

Delta Elevator Co. Ltd., 509 Mill Street, Kitchener, Ontario N2G 2Y5 Canada
Telephone: (519) 745-5789 Fax: (519) 745-7587 Email: sales@delta-elevator.com
www.delta-elevator.com

WHO WE ARE

Delta Elevator Co. Ltd. has been in business since 1967. With a strong background in elevator maintenance, repairs, modernizations and new construction, Delta's products are field tested and are of the highest quality.

Delta's manufacturing plant is in the heart of Ontario's technology triangle. Delta's commitment to high manufacturing standards results in elevator products with the highest reliability possible.

ECONOMICAL AND RELIABLE ELEVATORS FOR LOW TO MID-RISE APPLICATIONS



HYDRAULIC PASSENGER ELEVATORS

This line of elevators is ideal for low to mid-rise applications up to 7 floors.

- Speeds ranging from 0.4 m/s to 0.75 m/s
- Capacities from 910 kg to 2500 kg
- Microprocessor based dispatching
- Simplex or Group Elevator Operation

Delta can also provide special hydraulic elevators including:

- Holeless Hydraulic and Holeless Dual Cylinder
- Roped Hydraulic up to 10 floors



HYDRAULIC FREIGHT ELEVATORS

Delta's Hydraulic freight elevators are the economical and reliable solution for handling freight. Choose from Delta's standard freight elevators or draw on Delta's strong engineering department to meet your custom needs.

- Speeds ranging from 0.4 m/s to 0.75 m/s
- Capacities from 900 kg to 20,000 kg and beyond
- Freight platform lifts available



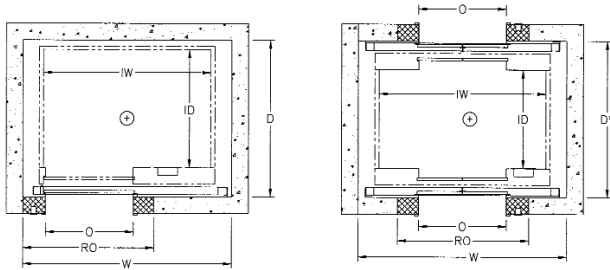
Your local Dealer:

Passenger Elevators

Wide Cab

CAPACITY (kg)	ENTRANCES	W (mm)	D (mm)	D* (mm)	IW (mm)	ID (mm)	O (mm)	RO (mm)
910	FRONT ONLY	2264	1800		1726	1300	914	1475
910	FRONT & REAR	2264	1960	2036	1726	1300	914	1475
1160	FRONT ONLY	2540	1800		2032	1300	1067	1675
1160	FRONT & REAR	2540	1960	2036	2032	1300	1067	1675
1365	FRONT ONLY	2540	1906		2032	1406	1067	1675
1365	FRONT & REAR	2540	2066	2142	2032	1406	1067	1675
1587-A	FRONT ONLY	2540	2110		2032	1610	1067	1675
1587-A	FRONT & REAR	2540	2270	2346	2032	1610	1067	1675
1587-B	FRONT ONLY	2540	2226		2032	1726	1067	1675
1587-B	FRONT & REAR	2540	2386	2462	2032	1726	1067	1675
1815	FRONT ONLY	2845	2110		2306	1610	1219	1860
1815	FRONT & REAR	2845	2270	2346	2306	1610	1219	1860
2275	FRONT ONLY	2845	2532		2306	2032	1219	1860
2275	FRONT & REAR	2845	2692	2768	2306	2032	1219	1860

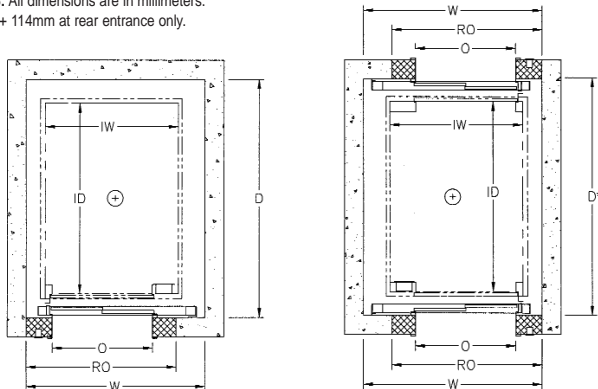
NOTES: All dimensions are in millimeters.
D* = D + 76mm at rear entrance only.



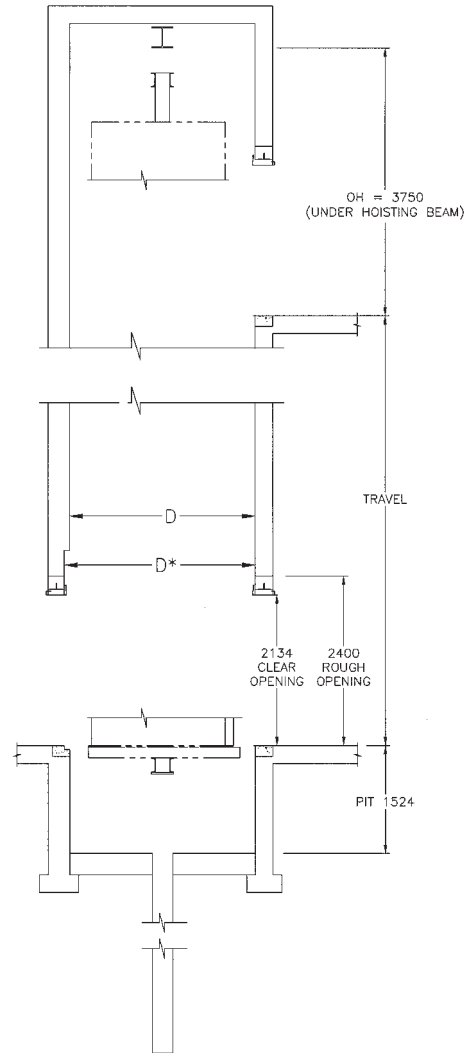
Deep Cab

CAPACITY (kg)	ENTRANCES	W (mm)	D (mm)	D* (mm)	IW (mm)	ID (mm)	O (mm)	RO (mm)
910	FRONT ONLY	1908	2312		1370	1726	914	1475
910	FRONT & REAR	1908	2500	2614	1370	1726	914	1475
1160	FRONT ONLY	1908	2648		1370	2032	914	1475
1160	FRONT & REAR	1908	2836	2950	1370	2032	914	1475
1365	FRONT ONLY	1944	2648		1406	2032	1067	1675
1365	FRONT & REAR	1944	2836	2950	1406	2032	1067	1675
1587	FRONT ONLY	2148	2648		1610	2032	1067	1675
1587	FRONT & REAR	2148	2836	2950	1610	2032	1067	1675
1815	FRONT ONLY	2240	2940		1598	2364	1219	1860
1815	FRONT & REAR	2240	3138	3252	1598	2364	1219	1860
2050-A	FRONT ONLY	2240	3130		1598	2554	1219	1860
2050-A	FRONT & REAR	2240	3328	3442	1598	2554	1219	1860
2050-B	FRONT ONLY	2240	2940		1698	2364	1219	1860
2050-B	FRONT & REAR	2240	3138	3252	1698	2364	1219	1860
2275-A	FRONT ONLY	2240	3130		1698	2554	1219	1860
2275-A	FRONT & REAR	2240	3328	3442	1698	2554	1219	1860
2275-B	FRONT ONLY	2240	3130		1726	2554	1219	1860
2275-B	FRONT & REAR	2240	3328	3442	1726	2554	1219	1860
2275-C	FRONT ONLY	2438	3130		1726	2554	1372	2010
2275-C	FRONT & REAR	2438	3328	3442	1726	2554	1372	2010
2500	FRONT ONLY	2574	3130		2032	2554	1372	2010
2500	FRONT & REAR	2574	3328	3442	2032	2554	1372	2010

NOTES: All dimensions are in millimeters.
D* = D + 114mm at rear entrance only.



Hydraulic Elevators Hoistway Cross-Section



OH (Overhead Height) will increase if Cab Height increases beyond standard 2438 Cab Height (2286mm Clear Inside Height)

FREIGHT ELEVATORS

Delta Elevator has significant expertise in the design and manufacture of hydraulic freight elevators and hydraulic freight platform lifts.

Delta can design custom configurations, with capacities of 900 kg to 20,000 kg and beyond to meet your special needs