



OH (OVERHEAD HEIGHT) WILL INCREASE IF CAB HEIGHT INCREASES BEYOND STANDARD 2438MM CAB HEIGHT (2286MM CLEAR INSIDE HEIGHT).

RECOMMENDED SIZES FOR STANDARD DEEP ELEVATORS WITH INGROUND CYLINDERS

CAPACITY (kg)	ENTRANCES	W (mm)	D (mm)	IW (mm)	ID (mm)	O (mm)	RO (mm)	OH (mm)
910	FRONT ONLY	1908	2312	1370	1726	914	1475	3750
1160	FRONT ONLY	1908	2648	1370	2032	914	1475	3750
1365	FRONT ONLY	1944	2648	1406	2032	1067	1675	3750
1587	FRONT ONLY	2148	2648	1610	2032	1067	1675	3750
1815	FRONT ONLY	2240	2940	1598	2364	1219	1860	3750
2050-A	FRONT ONLY	2240	3130	1598	2554	1219	1860	3750
2050-B	FRONT ONLY	2240	2940	1698	2364	1219	1860	3750
2275-A	FRONT ONLY	2240	3130	1698	2554	1219	1860	3750
2275-B	FRONT ONLY	2240	3130	1726	2554	1219	1860	3750
2275-C	FRONT ONLY	2438	3130	1726	2554	1372	2010	3750
2500	FRONT ONLY	2574	3130	2032	2554	1372	2010	3750

TO MEET SEISMIC CRITERIA FOR ZONES 2 OR GREATER, CONSULT DELTA ELEVATOR FOR INCREASED HOISTWAY DIMENSION "W".



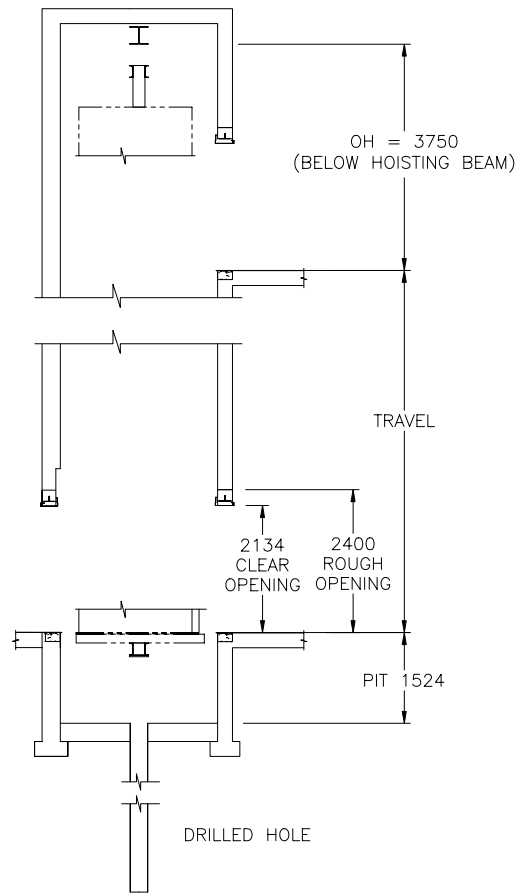
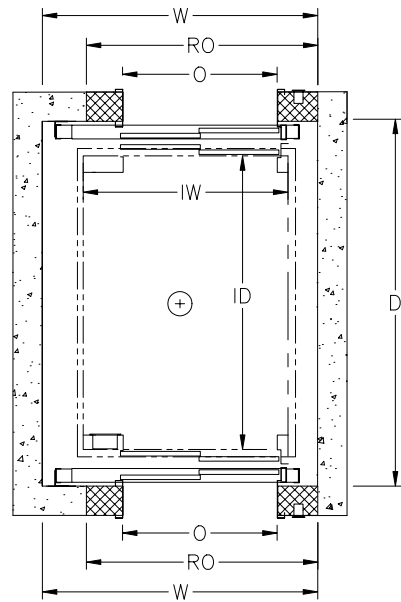
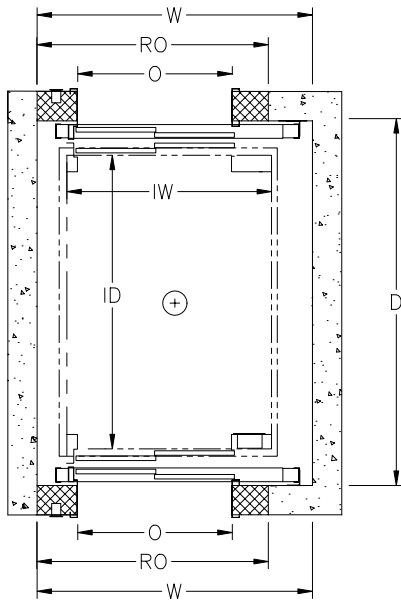


WWW.DELTA-ELEVATOR.COM

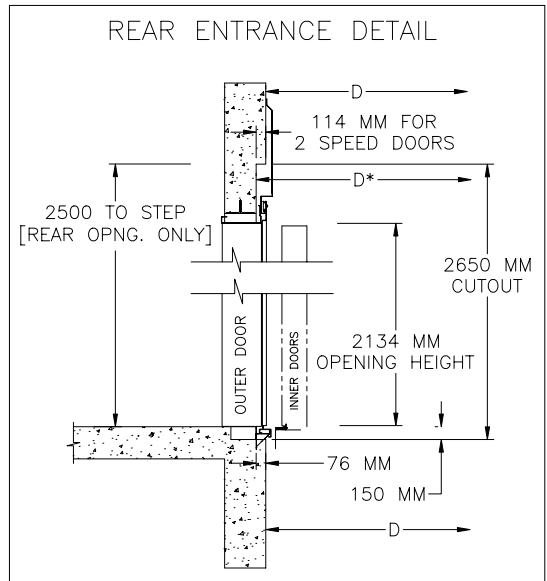
LIFT TYPE
PASSENGER ELEVATOR
CONVENTIONAL HYDRAULIC (CHP)

TITLE
DEEP CAB - FRONT ENTRANCES
TWO SPEED SIDE OPENING DOORS

DRAWING NO. DEEP-ING	REV. 1	SHEET 1 OF 2
-------------------------	-----------	-----------------



OH (OVERHEAD HEIGHT) WILL INCREASE IF CAB HEIGHT INCREASES BEYOND STANDARD 2438MM CAB HEIGHT (2286MM CLEAR INSIDE HEIGHT)



RECOMMENDED SIZES FOR STANDARD DEEP ELEVATORS WITH INGROUND CYLINDERS

CAPACITY (kg)	ENTRANCES	W (mm)	D (mm)	D* (mm)	IW (mm)	ID (mm)	O (mm)	RO (mm)
910	FRONT & REAR	1908	2500	2614	1370	1726	914	1475
1160	FRONT & REAR	1908	2836	2950	1370	2032	914	1475
1365	FRONT & REAR	1944	2836	2950	1406	2032	1067	1675
1587	FRONT & REAR	2148	2836	2950	1610	2032	1067	1675
1815	FRONT & REAR	2240	3138	3252	1598	2364	1219	1860
2050-A	FRONT & REAR	2240	3328	3442	1598	2554	1219	1860
2050-B	FRONT & REAR	2240	3138	3252	1698	2364	1219	1860
2275-A	FRONT & REAR	2240	3328	3442	1698	2554	1219	1860
2275-B	FRONT & REAR	2240	3328	3442	1726	2554	1219	1860
2275-C	FRONT & REAR	2438	3328	3442	1726	2554	1372	2010
2500	FRONT & REAR	2574	3328	3442	2032	2554	1372	2010

D* = D + 114MM AT REAR ENTRANCE ONLY
 TO MEET SEISMIC CRITERIA FOR ZONES 2 OR GREATER, CONSULT DELTA ELEVATOR FOR INCREASED HOISTWAY DIMENSION "W".

Proudly Canadian

DELTA ELEVATOR

WWW.DELTA-ELEVATOR.COM

LIFT TYPE
 PASSENGER ELEVATOR
 CONVENTIONAL HYDRAULIC (CHP)

TITLE
 DEEP CAB - FRONT & REAR ENTRANCES
 TWO SPEED SIDE OPENING DOORS

DRAWING NO. DEEP-ING	REV. 1	SHEET 2 OF 2
-------------------------	-----------	-----------------