

# DELTA 7000 SHOP DRAWINGS

## PROVISIONS BY OTHER CONTRACTORS

IMPORTANT – THE FOLLOWING SHOULD BE SUPPLIED BY THE OWNER OR HIS AGENT

1. HOISTWAY AND MACHINE ROOM IN ACCORDANCE WITH ELEVATOR, SAFETY AND BUILDING CODES.
2. HOISTWAY VENTING AND FIRE RATING ACCORDING TO LOCAL CODE REQUIREMENTS.
3. PLUMB HOISTWAY WITH VARIATIONS NOT TO EXCEED 13mm. SMOOTH PAINTED PLASTER OR DRYWALL SURFACE REQUIRED FULL HEIGHT OF INSIDE OF HOISTWAY ON ENTRANCE SIDES. ALL LEDGES OVER 50mm TO BE BEVELLED 75° TO THE HORIZONTAL.
4. NECESSARY REMOVABLE BARRICADES OUTSIDE OF HOISTWAY TO MEET APPLICABLE LOCAL SAFETY CODE REQUIREMENTS.
5. NO CONDUIT, WIRING, OR PIPING OTHER THAN THAT PERTAINING TO ELEVATOR(S) IS PERMITTED IN THE HOISTWAY.
6. MACHINE ROOM TO BE LOCATED AT THE BOTTOM FLOOR ADJACENT TO THE HOISTWAY UNLESS OTHERWISE SHOWN.
7. PROVIDE A SELF-CLOSING, SELF-LATCHING MACHINE ROOM DOOR TO MEET APPLICABLE BUILDING CODES.
8. NO LIQUID CARRYING PIPES PERMITTED IN MACHINE ROOM.
9. 120 VAC LIGHT FIXTURE(S), SWITCH AND GROUND FAULT INTERRUPT RECEPTACLE OUTLET IN EACH PIT AND MACHINE ROOM. SWITCH TO BE LOCATED AS SHOWN ON DRAWINGS. ALL CONDUIT IN THE HOISTWAY TO BE EMT.
10. ELEVATOR FEEDERS INCLUDING LOCKABLE, FUSED DISCONNECT SWITCHES OR CIRCUIT BREAKERS WIRED TO OUR CONTROLLER; SEE DETAIL "F."
11. ADEQUATE SUPPORT FOR GUIDE RAIL FASTENING TO BE PROVIDED AT GUIDE RAIL BRACKET LOCATIONS AS PER REACTIONS INDICATED; SEE DETAIL "D", "E", AND "G."
12. ALL BLOCKOUTS, UNDERPINNING, POCKETS, PATCHING, GROUTING AND CONCRETE WORK WHERE REQUIRED.
13. FRONT WALLS (ROUGH OPENINGS) TO BE FILLED AND FINISHED AFTER ENTRANCE FRAMES HAVE BEEN INSTALLED. FINISH MASONRY AND GROUT IN SADDLES FULL LENGTH.
14. ENTRANCE FRAMES ARE NOT DESIGNED TO SUPPORT OVERHEAD WALL LOADS. SUITABLE SUPPORTS FOR THESE LOADS MUST BE PROVIDED.
15. MAINTAIN MACHINE ROOM AND HOISTWAY TEMPERATURE BETWEEN 15°C & 32°C.
16. SLEEVES FOR OIL AND ELECTRIC DUCTS FROM MACHINE ROOM TO HOISTWAY AS REQUIRED.
17. CONTROLLER AND PUMPING UNIT PLACEMENT SUBJECT TO JOB CONDITIONS.
18. PIT WATERPROOFING, WHERE REQUIRED.
19. SUMP PUMP EXTERNAL TO THE SHAFT, WHERE REQUIRED. SUMP HOLE TO BE OUTSIDE HOISTWAY & 600MM DEEPER THAN PIT. CHECK VALVE ON SUMP DISCHARGE REQUIRED. DESIGN TO HANDLE POSSIBLE OIL IN SUMP DISCHARGE.
20. PROVIDE A BELL & INSTRUCTIONS ON HOW TO SIGNAL AN ATTENDANT FOR LIFT ASSISTANCE AS PER ITEM "J" ON REGULATORY FORM ED09088.
21. IN JURISDICTIONS 'WHERE APPLICABLE' ; A CHEQUE FROM THE OWNER TO COVER THE FIRST YEAR'S LICENSING FEE MUST BE SUPPLIED AT THE TIME OF INSPECTION.

## TECHNICAL DATA

|                  |                      |                     |  |
|------------------|----------------------|---------------------|--|
| GENERAL          | CAPACITY             | 454 kg              |  |
|                  | SPEED UP/DOWN        | 0.13 m/s            |  |
| MOTOR            | TRAVEL               | MAXIMUM 7000 mm     |  |
|                  | LANDINGS             | MAXIMUM 4           |  |
|                  | OPENINGS             | FRONT / REAR / SIDE |  |
|                  | OPERATION            | CONSTANT PRESSURE   |  |
| TANK             | PUMP UNIT TYPE       | } JOB SPECIFIC      |  |
|                  | VALVE TYPE           |                     |  |
| WORKING PRESSURE |                      |                     |  |
| RELIEF PRESSURE  |                      |                     |  |
| SHAFT            | RAILS                | 11.9 kg/m           |  |
|                  | MAX. BRACKET SPACING | 3000 mm             |  |
| CAR              | EMPTY CAR MASS (EST) |                     |  |
| JACK             | PLUNGER OD           | } JOB SPECIFIC      |  |
|                  | PLUNGER WALL         |                     |  |
|                  | TOTAL PLUNGER LENGTH |                     |  |
|                  | CYLINDER OD          |                     |  |
|                  | CYLINDER WALL        |                     |  |
| HOSE             | HOPE TYPE            |                     |  |
|                  | BURST                |                     |  |
| ROPING           | ROPING               |                     |  |
|                  | WIRE HOIST ROPE      |                     |  |

THIS ELEVATING DEVICE IS ENGINEERED AND MANUFACTURED BY DELTA ELEVATOR FOR THE ALLIED ELEVATOR GROUP OF COMPANIES.



WWW.DELTA-ELEVATOR.COM

THE FOLLOWING STATEMENT TO BE SIGNED BY CONTRACTOR, ENGINEER OR ARCHITECT RESPONSIBLE FOR THE PROJECT:

"SUPPORTING STRUCTURE AND BUILDING WILL SAFELY SUPPORT ALL LOADS APPLIED BY THE ELEVATING DEVICE AS INDICATED ON THIS DRAWING"

SIGNED \_\_\_\_\_ DATE \_\_\_\_\_

COMPANY \_\_\_\_\_



DELTA ELEVATOR CO. LTD.  
509 MILL STREET  
KITCHENER, ON  
N2G 2Y5  
PHONE: (519) 745-5789  
FAX: (519) 745-7587  
www.delta-elevator.com

OFFICES IN KITCHENER, MISSISSAUGA AND OWEN SOUND  
MEMBER OF THE CANADIAN ELEVATOR CONTRACTORS ASSOCIATION

TITLE: NEW INSTALLATION – ENCLOSED VERTICAL ACCESSIBILITY LIFT

|                              |           |                        |              |
|------------------------------|-----------|------------------------|--------------|
| APPLICABLE CODE: CSA B355-00 | DR'N      | AP'VD                  | SCALE<br>NTS |
| INSTALLATION ADDRESS:        | DWG. NO.  | DATE<br>March 2007     |              |
|                              | SALES NO. | SHEET 1 OF 4<br>REV. 2 |              |

DRAWING:

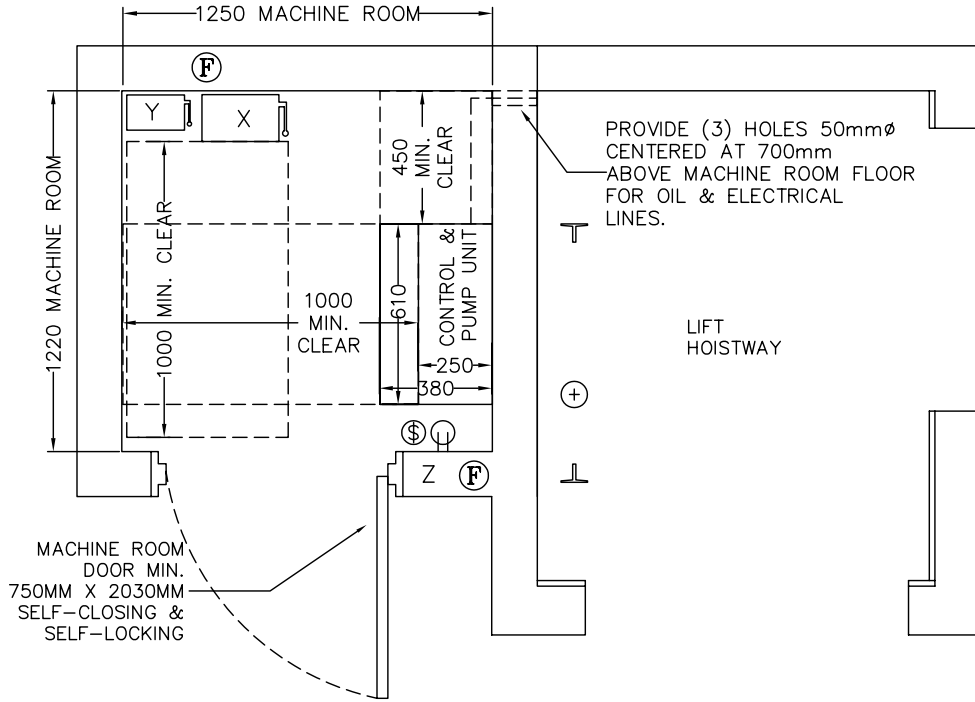
TECHNICAL DATA

# DELTA 7000 SHOP DRAWINGS

PREFERRED MACHINE ROOM SIZE.

FOR SMALLER MACHINE ROOM SIZE OR REMOTE LOCATIONS, CONSULT DELTA.

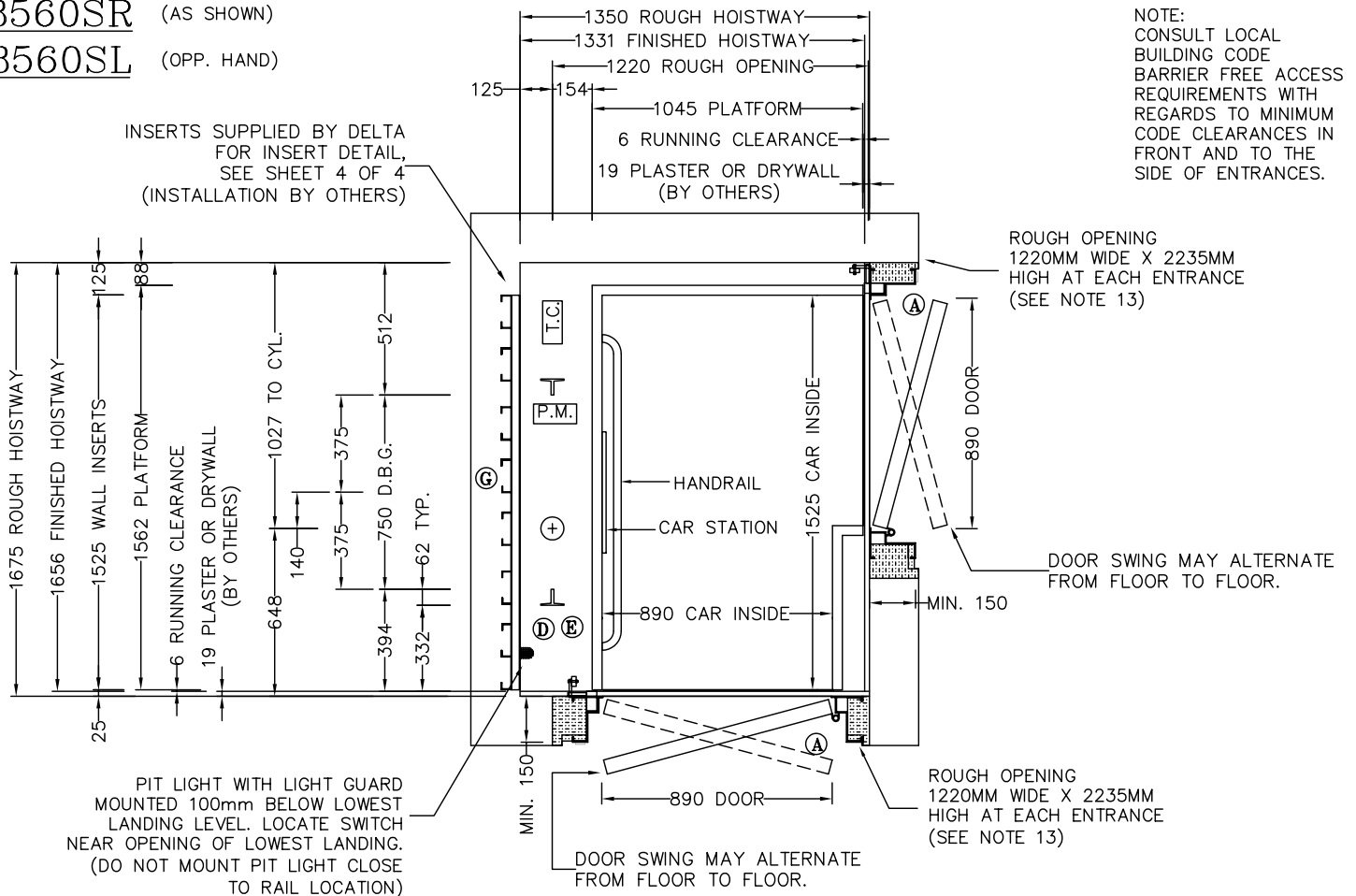
LOCATION:  
AT LOWEST LANDING  
BESIDE HOISTWAY AT RAIL  
SIDE.  
(2150mm MIN. HEIGHT)



**3560SR** (AS SHOWN)

**3560SL** (OPP. HAND)

INSERTS SUPPLIED BY DELTA FOR INSERT DETAIL, SEE SHEET 4 OF 4 (INSTALLATION BY OTHERS)



NOTE:  
CONSULT LOCAL BUILDING CODE BARRIER FREE ACCESS REQUIREMENTS WITH REGARDS TO MINIMUM CODE CLEARANCES IN FRONT AND TO THE SIDE OF ENTRANCES.

ROUGH OPENING 1220MM WIDE X 2235MM HIGH AT EACH ENTRANCE (SEE NOTE 13)

DOOR SWING MAY ALTERNATE FROM FLOOR TO FLOOR.

ROUGH OPENING 1220MM WIDE X 2235MM HIGH AT EACH ENTRANCE (SEE NOTE 13)

DOOR SWING MAY ALTERNATE FROM FLOOR TO FLOOR.

**DELTA**  
**ELEVATOR**

DELTA ELEVATOR CO. LTD.  
509 MILL STREET  
KITCHENER, ON  
N2G 2Y5  
PHONE: (519) 745-5789  
FAX: (519) 745-7587

www.delta-elevator.com

OFFICES IN KITCHENER, MISSISSAUGA AND OWEN SOUND  
MEMBER OF THE CANADIAN ELEVATOR CONTRACTORS ASSOCIATION

TITLE: NEW INSTALLATION - ENCLOSED VERTICAL ACCESSIBILITY LIFT

APPLICABLE CODE: CSA B355-00

DR'N

AP'VD

SCALE  
NTS

INSTALLATION ADDRESS:

DWG. NO.

DATE

March 2007

SALES NO.

SHEET 2 OF 4

REV. 2

DRAWING:

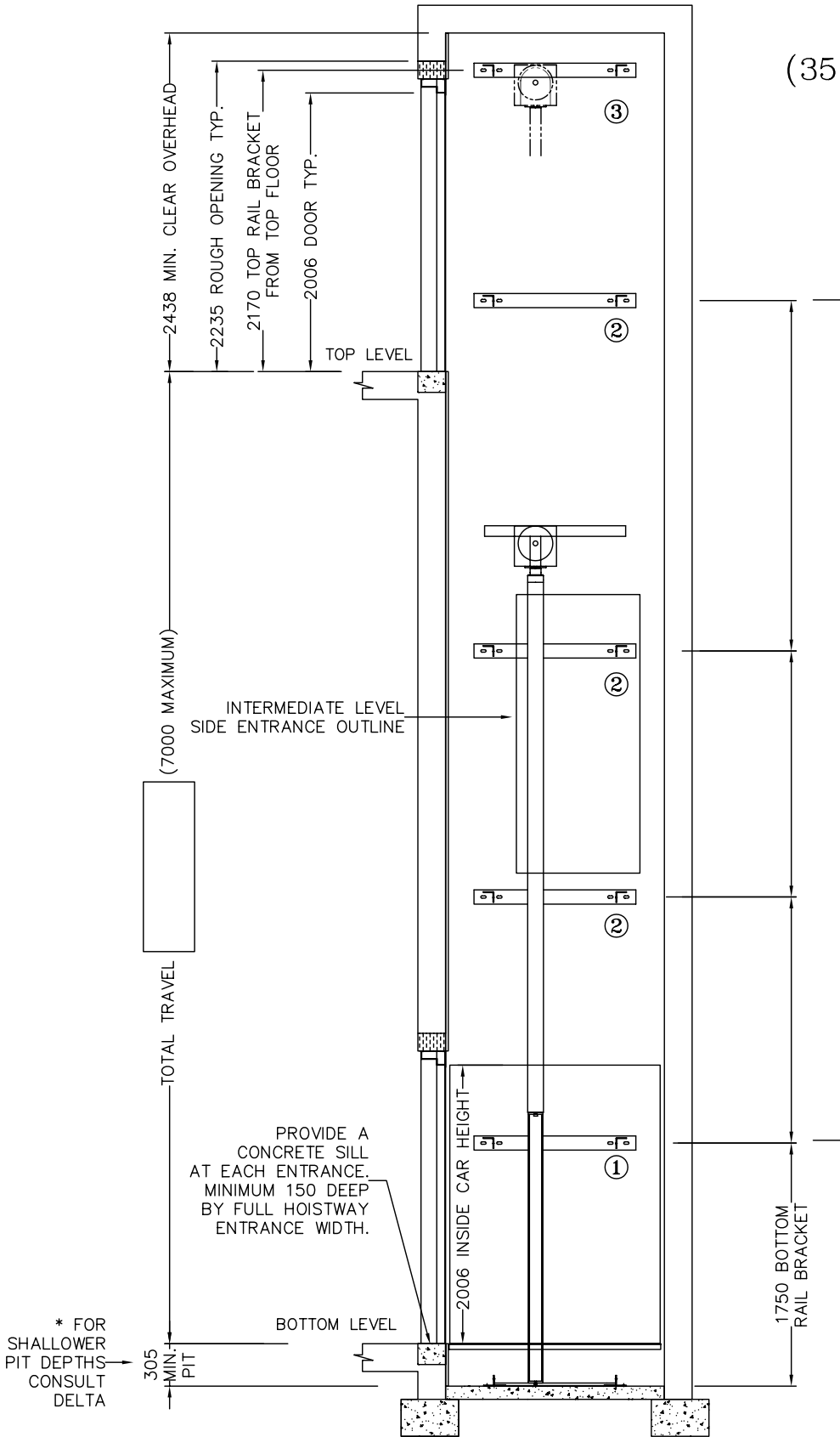
PLAN VIEW - 3560SR, 3560SL

# DELTA 7000 SHOP DRAWINGS

## FRONT/SIDE ENTRANCE (3560SR, 3560SL, 4760SR, 4760SL)

ENTRANCES MAY BE FRONT OR SIDE AT ANY LEVEL.

NOTE:  
MAXIMUM  
4 LEVELS



QUANTITY AND LOCATION OF INTERMEDIATE RAIL BRACKETS (INSERT LOCATIONS) TO BE SPECIFIED ON APPROVAL DRAWINGS

| ITEM | BRACKET/INSERT                     | LOCATION                                |
|------|------------------------------------|---|
| ③    | TOP RAIL BRACKET (INSERT)          | TOP IS FIXED AT 2170 FROM TOP FLOOR     |
| ②    | INTERMEDIATE RAIL BRACKET (INSERT) | CONSULT DELTA FOR QUANTITY AND LOCATION |
| ①    | BOTTOM RAIL BRACKET (INSERT)       | BOTTOM IS FIXED AT 1750 FROM PIT FLOOR  |

\* FOR SHALLOWER PIT DEPTHS CONSULT DELTA



DELTA ELEVATOR CO. LTD.  
509 MILL STREET  
KITCHENER, ON  
N2G 2Y5  
PHONE: (519) 745-5789  
FAX: (519) 745-7587

www.delta-elevator.com

OFFICES IN KITCHENER, MISSISSAUGA AND OWEN SOUND  
MEMBER OF THE CANADIAN ELEVATOR CONTRACTORS ASSOCIATION

TITLE: NEW INSTALLATION - ENCLOSED VERTICAL ACCESSIBILITY LIFT

APPLICABLE CODE: CSA B355-00

DR'N

AP'VD

SCALE NTS

INSTALLATION ADDRESS:

DWG. NO.

DATE  
March 2007

SALES NO.

SHEET 3 OF 4  
REV. 2

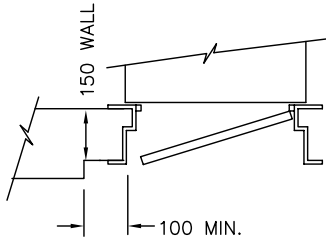
DRAWING:

ELEVATION VIEW

# DELTA 7000 SHOP DRAWINGS

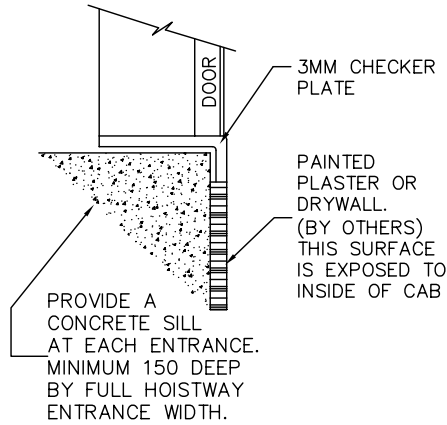
DETAIL (A)

STRIKE JAMB WALL FOR PUSHBUTTON ACCESS



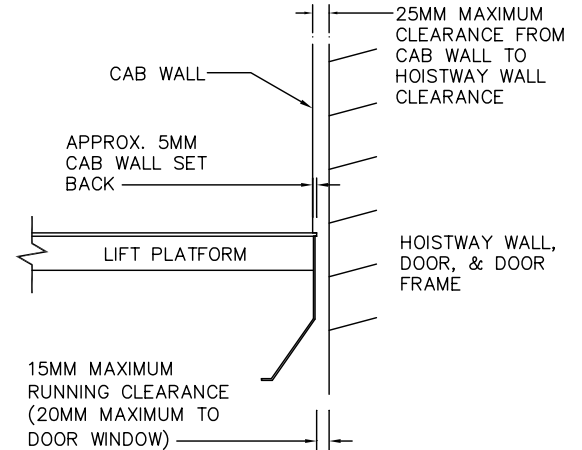
DETAIL (B)

DOOR SILL



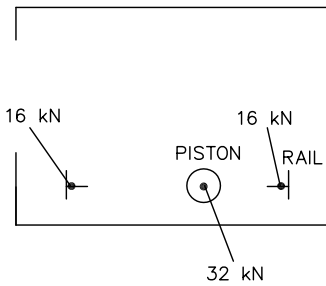
DETAIL (C)

RUNNING CLEARANCE



DETAIL (D)

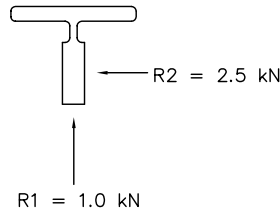
DIAGRAM FOR PIT REACTIONS



ALL REACTIONS DOUBLED FOR IMPACT

DETAIL (E)

MAXIMUM FORCES ON GUIDE RAILS



NOTE: RAIL BRACKET SUPPORT MAX. DEFLECTION IS 3MM

DETAIL (F)

MACHINE ROOM

ELECTRICAL EQUIPMENT (BY OTHERS)

(SEE NOTE 9 & 10; ALSO SEE SECTION 38 OF THE ELECTRICAL CODE)

- X MAIN DISCONNECT SWITCH FUSED WITH (12A TYPE D FUSE [208V 3PH]) OR (15A TYPE D FUSE [220V 1PH]) AND WITH AN AUXILIARY CONTACT THAT IS POSITIVELY OPENED MECHANICALLY, THE OPENING NOT BEING SOLELY DEPENDENT ON SPRINGS.
- Y CAR LIGHT DISCONNECT SWITCH. 120V-1PH-15A FUSED (DEDICATED CIRCUIT REQUIRED)
- Z LIGHT SWITCH AND GROUND FAULT INTERRUPT DUPLEX RECEPTACLE (DEDICATED CIRCUIT REQUIRED)

NOTE: ANOTHER DEDICATED CIRCUIT IS REQUIRED FOR THE PIT LIGHT AND RECEPTACLE PROVIDE A BUILDING GROUND WITH A DEDICATED CONDUCTOR, WIRED TO THE LIFT CONTROLLER AND SIZED ACCORDING TO THE APPLICABLE ELECTRICAL CODE.

DETAIL (G)

SUGGESTED WALL INSERT INSTALLATION

1. BREAK OUT AT LEAST HALF OF CONCRETE BLOCKS FOR A MINIMUM HEIGHT OF TWO BLOCKS

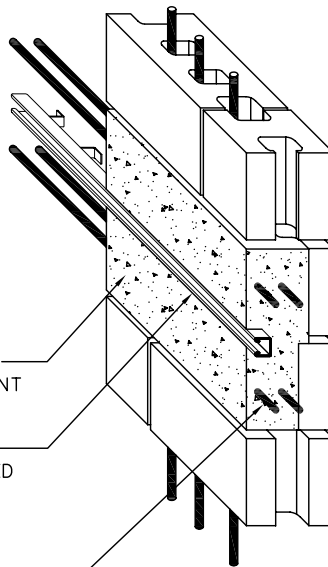
2. WALL INSERTS TO BE LOCATED AT ELEVATIONS OF RAIL BRACKETS SHOWN AND ON THE RAIL SIDE OF THE HOISTWAY, HORIZONTALLY SPACED AS SHOWN.

NOTE: A SOLID CONCRETE BAND CAN BE USED INSTEAD OF BREAKING OUT BLOCKS.

POURED CONCRETE MUST EXTEND AT LEAST 100MM (4") PAST THE END OF THE ADJACENT WALL.

UNISTRUT P3270 SERIES WALL INSERT(S) (PROVIDED BY DELTA), SHOULD BE INSTALLED LEVEL AND FLUSH WITH HOISTWAY WALL. (INSERTS CAN BE NAILED DIRECTLY ONTO CONCRETE FORMS).

RE-BARS: QUANTITY AND LOCATION BY BUILDING ARCHITECT OR ENGINEER



THE ELEVATING DEVICES CODE REQUIRES THAT THE BUILDING CONSTRUCTION FORMING THE SUPPORTS FOR THE GUIDE RAIL AND GUIDE RAIL BRACKETS SHALL BE DESIGNED TO WITHSTAND THE FORCES AS INDICATED ON THIS DRAWING. THE CONTRACTOR SHALL ENSURE THAT THE APPROPRIATE PROFESSIONAL (ARCHITECT AND/OR ENGINEER) REVIEW THE INDICATED FORCES TO ENSURE THAT THE BUILDING DESIGN AND CONSTRUCTION MEETS ALL REQUIRED CODES.



DELTA ELEVATOR CO. LTD.  
509 MILL STREET  
KITCHENER, ON  
N2G 2Y5  
PHONE: (519) 745-5789  
FAX: (519) 745-7587

www.delta-elevator.com

OFFICES IN KITCHENER, MISSISSAUGA AND OWEN SOUND  
MEMBER OF THE CANADIAN ELEVATOR CONTRACTORS ASSOCIATION

TITLE: NEW INSTALLATION - ENCLOSED VERTICAL ACCESSIBILITY LIFT

APPLICABLE CODE: CSA B355-00

DR'N

AP'VD

SCALE NTS

INSTALLATION ADDRESS:

DWG. NO.

DATE  
March 2007

SALES NO.

SHEET 4 OF 4  
REV. 2

DRAWING:

HOISTWAY DETAILS