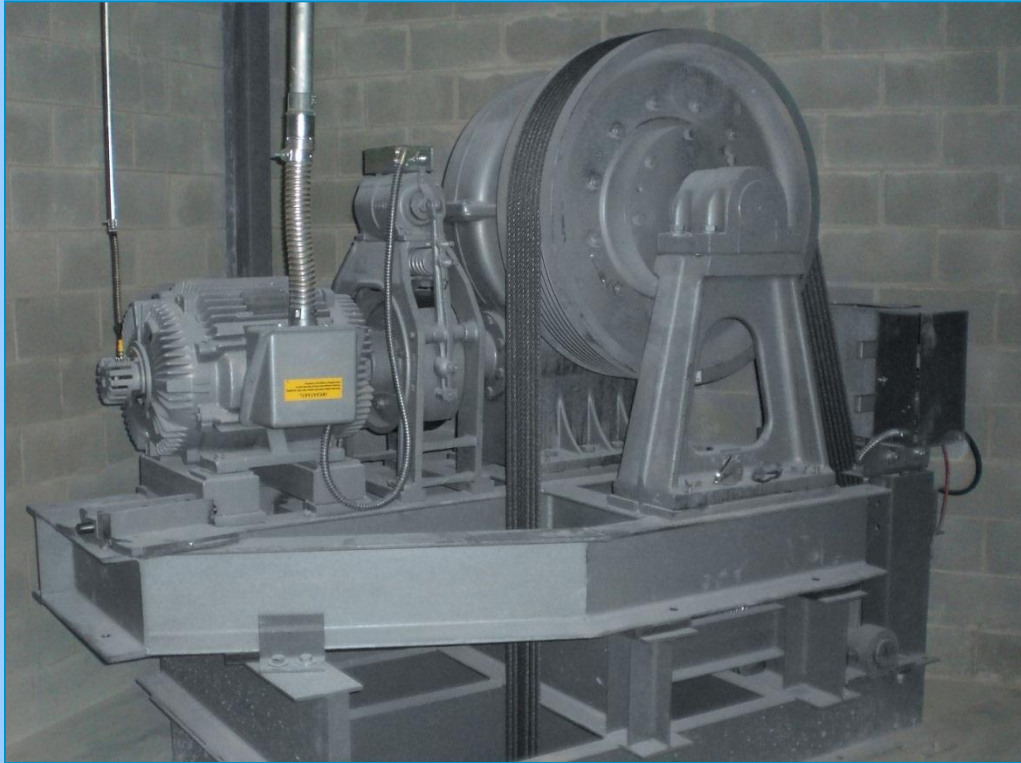


Traction Elevators

by

DELTA
ELEVATOR



A Long Term Investment in Your Building

The geared traction elevator configuration has demonstrated its reliability and durability for decades in a variety of uses.

When combined with a preventive maintenance program, many installations operate for over 20 years before a modernization is necessary.

Traction elevators are ideal for applications that require a combination of rapid speed, high travel, and heavy lifting capacity. This includes mid to high rise residential buildings, office towers, hospitals, and universities & colleges.

The heart of the Delta traction elevator is the geared machine, located either in a rooftop penthouse or in a basement machine room when a penthouse location is not available.

Geared technology combines a smooth, quiet ride, accurate levelling ability, and energy efficiency through the use of counterweights.

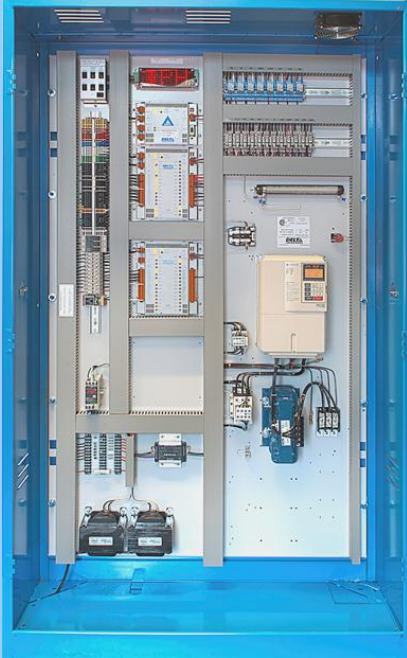
As well, modern traction elevators use a variable voltage, variable frequency (VVVF) drive to improve ride quality and reduce energy consumption.



Integrity, Service & Quality since 1967

Delta uses proven components throughout its traction elevator design:

The DMPC controller is designed by Delta and manufactured at our Kitchener, Ontario plant. It is reliable, upgradeable, easily serviced, and fully supported for all maintaining contractors.



Delta uses Hollister-Whitney machines for virtually all of its traction elevator installations. Hollister-Whitney is a well-respected American manufacturer that has been supplying superior elevator components for over 90 years.

The Delta entrance system and basic cab finishes come standard on our traction elevators. They were designed in-house and have been fully tested to meet all CSA requirements. Delta entrances, doors and basic cab finishes are manufactured at our Kitchener plant.



Fixtures and premium cab finishing options are sourced from a number of suppliers to ensure the final elevator appearance suits the specifics of your building's aesthetics and durability needs.

Elevator Configurations

When it comes to elevators, no one type fits all applications!

A traction elevator is an excellent configuration choice in many circumstances, such as high-rise buildings, but may not be suitable for other applications.

Delta's Sales staff can provide pre-contract design consultation to assist you in choosing the best configuration for your specific needs.

Building factors to consider when deciding whether to use a traction, MRL, hydraulic, or LULA elevator include:

- the availability and location of a machine room space,
- the building size and use,
- budget limitations,
- capacity requirements,
- serviceability needs, and
- energy consumption levels.

Delta also has expertise in accessibility lifts, LULAs, hydraulic elevators, freight elevators, and MRL elevators.

Traction Passenger Elevator Specifications

Capacity (kg)	910	950	1160	1200	1365	1587	1587	1815	2050	2050	2275	2275	2500
Orientation	Wide	Deep	Wide	Deep	Wide	Deep	Wide	Deep	Wide	Deep	Wide	Deep	Wide
Cab Size													
Width (mm)	1726	1370	2032	1406	2032	1610	2032	1598	1698	1598	1726	1698	2032
Depth (mm)	1300	1726	1300	2032	1406	2032	1610	2364	2364	2554	2554	2554	2554
Height (mm)	2286	2286	2286	2286	2286	2286	2286	2286	2286	2286	2286	2286	2286
Door Width (mm)	914	914	1067	1067	1067	1067	1067	1219	1219	1219	1219	1219	1372
Hoistway Size													
Front Only Door													
Depth (mm)	1800	2302	1800	2608	1906	2608	2110	2940	2940	3130	3130	3130	3130
Width (mm)	2264	1908	2540	1981	2540	2148	2540	2426	2576	2426	2604	2576	2910
Hoistway Size													
Front & Rear Doors													
Depth (mm)	2036	2614	2036	2920	2142	2920	2346	3252	3252	3442	3442	3442	3442
Width (mm)	2540	2193	2845	2134	2845	2383	2845	2426	2576	2426	2604	2576	2910
Speed of 0.75 – 1.00 m/s													
Pit Depth (mm)	1626	1626	1626	1626	1626	1626	1626	1750	1750	1750	1750	1750	1750
Overhead (mm)	4500	4500	4500	4500	4500	4500	4500	4575	4575	4575	4575	4575	4575
Speed of >1.00 – 1.75 m/s													
Pit Depth (mm)	1676	1676	1676	1676	1676	1676	1676	1750	1750	1750	1750	1750	1750
Overhead (mm)	4675	4675	4675	4675	4675	4675	4675	4750	4750	4750	4750	4750	4750

Features

- Governed by the CSA-B44 Elevator Code
- Capacity: 910 – 2,500 kg
- Speed: 0.50 – 2.25 m/s
- Maximum floors: 31
- Maximum travel: 100 m
- Cab size: 2.36 – 5.19 m²
- Entrances: 1 or 2 speed or centre opening
- Safety features:
 - Infra-red door curtain
 - Emergency cab lighting
 - Emergency phone
 - Rope gripper
- Applications:
 - Mid and high rise residential & commercial
 - Hospitals
 - Universities & Colleges

Custom Traction Elevators

Need a custom traction elevator installation?

Interested in a traction freight elevator?

Call us – Delta has the resources to meet your custom application needs:

- Delta's experienced sales staff will work with you and your architect to assess the elevator requirements for your building project.
- Our mechanical and electrical engineering staff will design the best solution for your specific needs.
- Your custom elevator will be manufactured at our ISO-certified production facilities located in Kitchener, Ontario.
- Our field operations staff will ensure that the elevator is installed to the highest standard.

Who We Are

Delta has been in business since 1967, and has offices in the GTA, Peterborough, Owen Sound, and Kitchener, servicing Southwest and Central Ontario. With proven experience in new elevator construction, maintenance, repairs, and modernizations, Delta's products and services are high quality and field-tested.

Delta's commitment to **Integrity, Service, and Quality** results in elevator products and services with superior reliability.



Quality Design, Manufacture, Installation and Service

As a leader in the elevator industry, Delta provides clients with:

✓ **Coverage throughout Southwest and Central Ontario**

Delta has mechanics permanently stationed in Woodstock, Owen Sound, Kitchener, Mississauga, and Peterborough. This allows customers to single source Delta as their elevator supplier for all properties located within this extensive coverage area. The result is a uniformly superior quality level as well as easier project management.

✓ **Design consultation and specification writing and reviews**

Delta's sales staff are qualified to assist with design consultation from the earliest part of your building project. Our staff can also help create a new elevator specification or provide feedback on existing specifications. **We believe that it is more important for you to have the right elevator even when it may not be a Delta elevator.**

✓ **In-house elevator mechanics fully registered with the TSSA**

Delta achieves high quality installations through the use of its own mechanics, as opposed to contracting this important function out to others. Delta's carefully screened staff are licensed mechanics or enrolled in the apprenticeship program. All employees undergo rigorous on-the-job and in-the-classroom technical training, as well as thorough safety training.

✓ **40+ years of elevator industry experience on all styles of elevating devices in Ontario**

Delta has career elevator staff in all areas of its operation: Sales, engineering, manufacturing, maintenance, and construction. This means Delta can meet virtually all of your elevator needs, and provide a solution to even the most challenging problem. **If a standard elevator is not a viable solution, Delta has the resources and experience to design, manufacture, and install a custom unit.**

Delta continues to lead the way in providing clients with products and services that exceed expectations.